

## Mezzanine Inspection Report (Scoping)

<b>Date:</b> 01/29/2015	<b>Station Name:</b> D05 Capitol South	<b>Mezzanine #:</b> 059	<b>Completed By:</b> Chris Loose
-------------------------	--	-------------------------	----------------------------------

### Summary

Video scoping and pull string installation was completed in the communications duct for faregate array. Video scoping was completed in the power duct for the faregate array. Video scoping and pull string installation was not completed in the power duct between kiosk and AFC panel due to collapsed duct at expansion join in mezzanine floor.

Scanning was completed at this station. Due to existing in floor conduits and ducts, no clear in-floor path is feasible, and therefore an overhead conduit run is proposed for this station. The conduit will run along the recessed channels in the mezzanine ceiling and wrap around the wall towards room #C207. The conduit will be core drilled through the wall above the door and into the backroom hallway. The conduit will continue along the ceiling of the backrooms until reaching the area in the wall in front of room #C201 where the AFC panel is. The proposed conduit will then be core drilled through the wall and drop down to the top of the AFC panel.

### Scoping of Faregate Array(s)

Task	Yes/No	Notes
<b>Communications Duct – Faregate Array (8 Gates)</b>		
Was video scoping completed for the entire duct run?	Yes	Refer to WMATA Capitol South 6inch Comm to Faregates Video.avi file.
Were pull strings installed at all faregates in the array?	Yes	
Were there any obstructions or blockages? Provide details of type and specific location.	No	
Is the duct at capacity? Provide additional details about the dimensions of ducts and number of wires.	No	6" duct less than 10 wires
<b>Power Duct – Faregate Array (8 Gates)</b>		
Was video scoping completed for the entire duct run?	Yes	Refer to WMATA Capitol South 6inch Power to Faregate(2).avi file.
Were there any obstructions or blockages? Provide details of type and specific location.	No	
Is the duct at capacity? Provide additional details about the dimensions of ducts and number of wires.	No	6" duct less than 15 wires



Photo #1 – D05 Capitol South: Proposed overhead conduit along mezzanine ceiling



Photo #2 – D05 Capitol South: Proposed overhead conduit and existing in floor duct runs



Photo #3 – D05 Capitol South: Proposed overhead conduit into backrooms

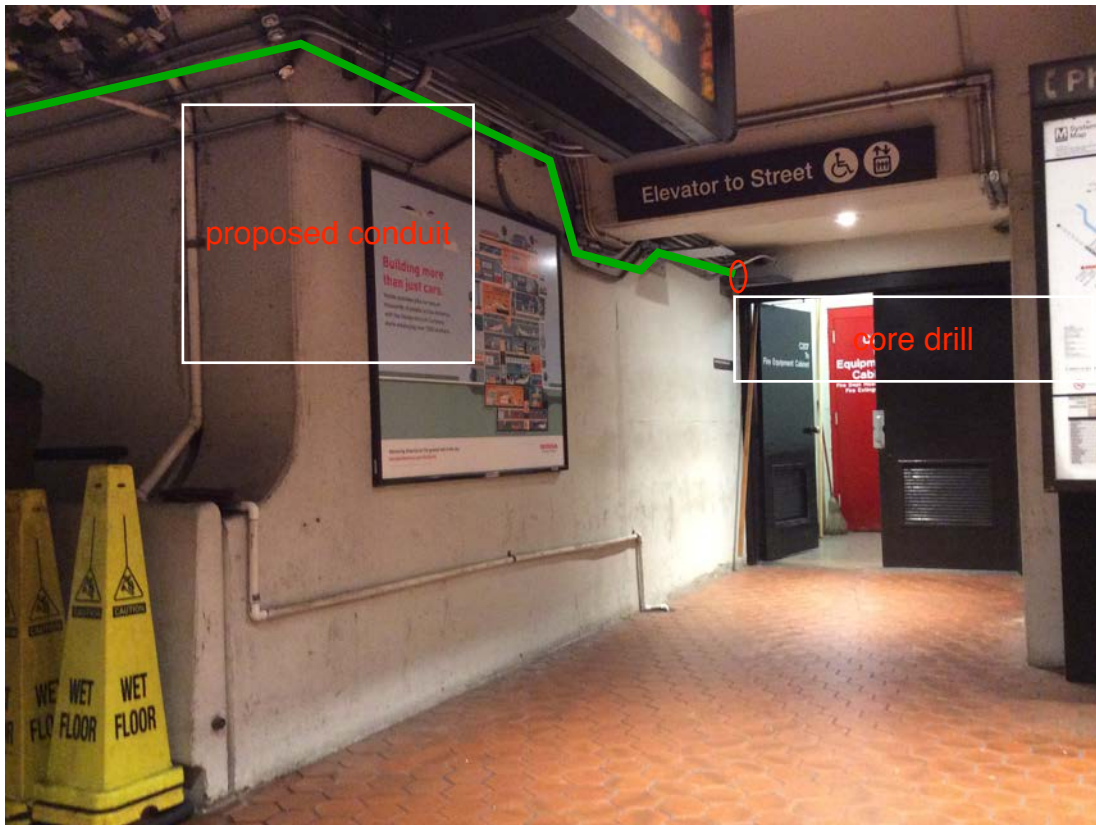


Photo #4 – D05 Capitol South: Proposed overhead conduit inside backrooms

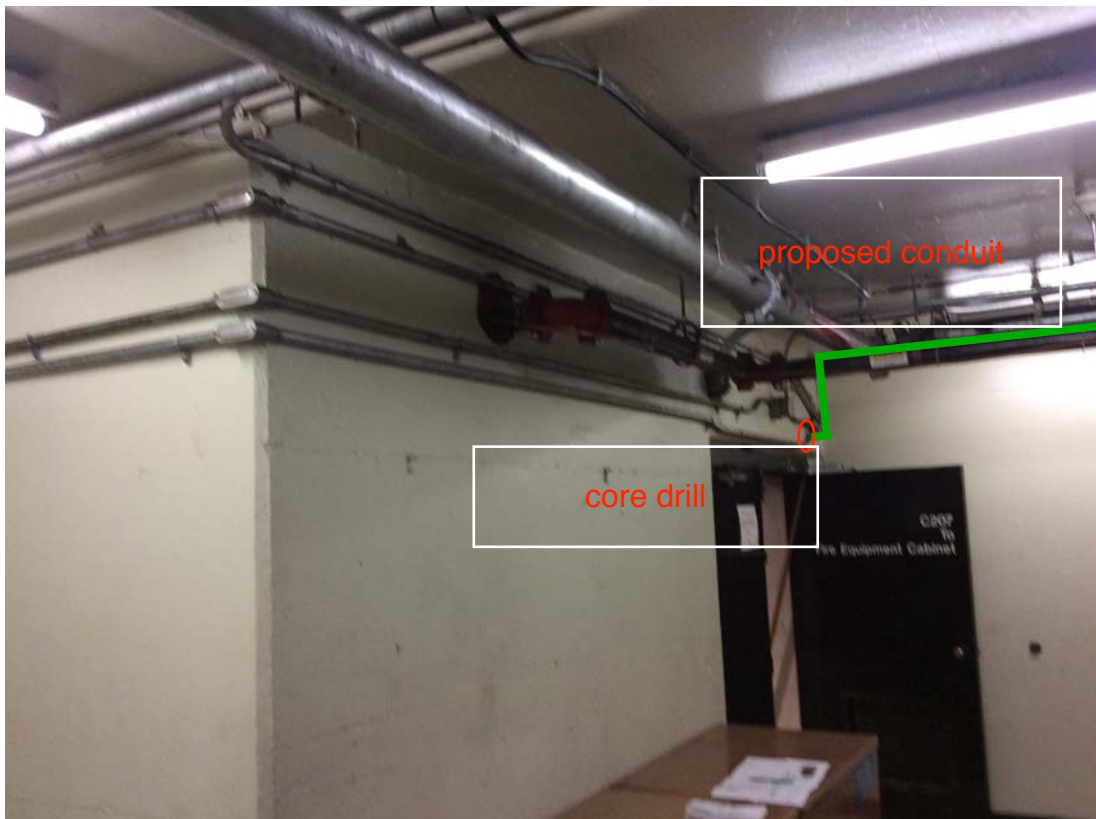




Photo #5 – D05 Capitol South: Proposed overhead conduit and existing in floor duct runs

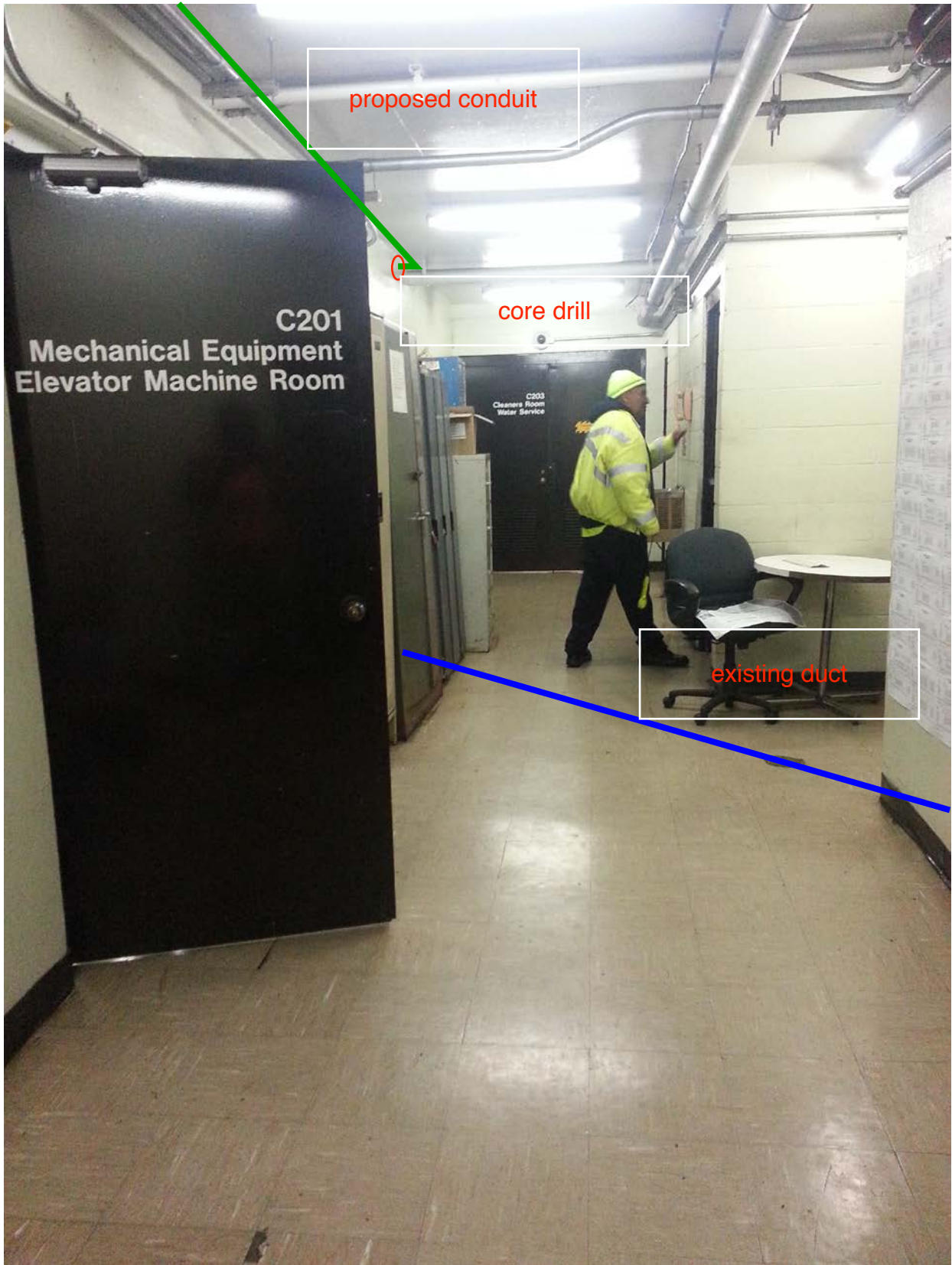
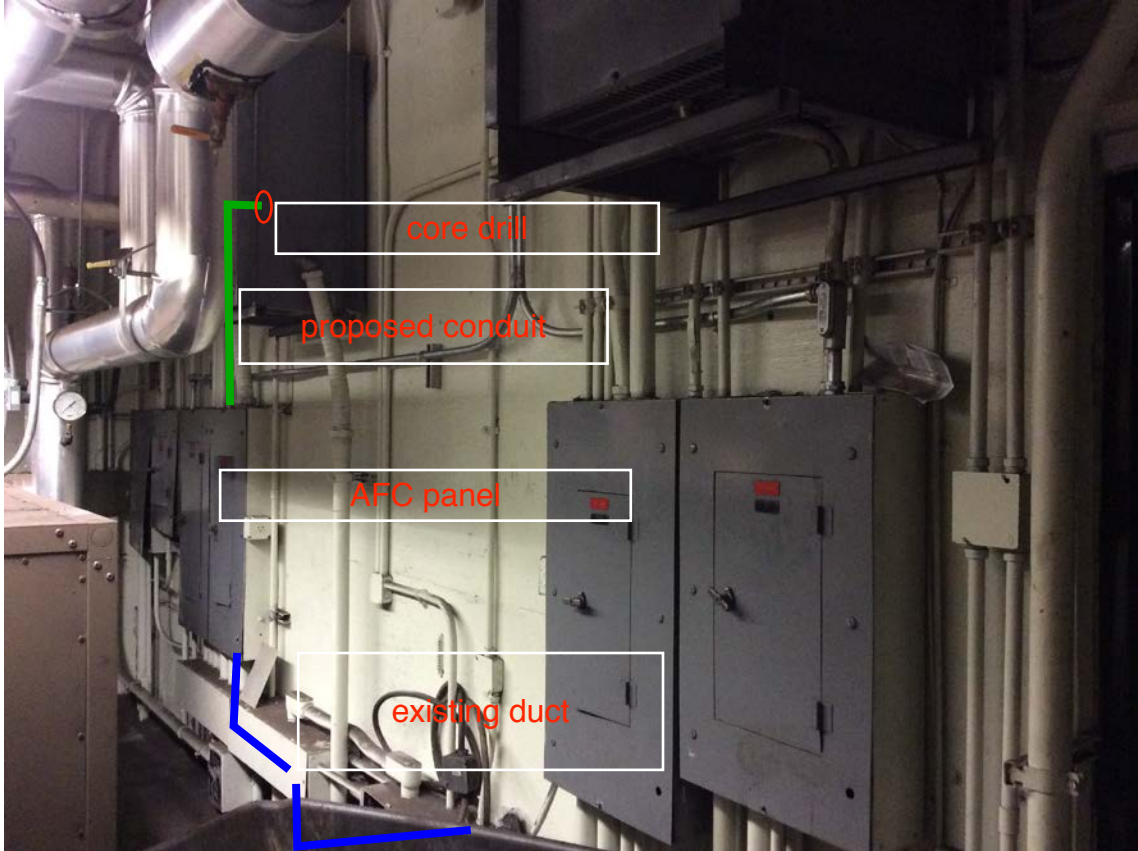


Photo #6 – D05 Capitol South: Proposed overhead conduit into AFC panel and existing in floor duct run into junction box below AFC panel

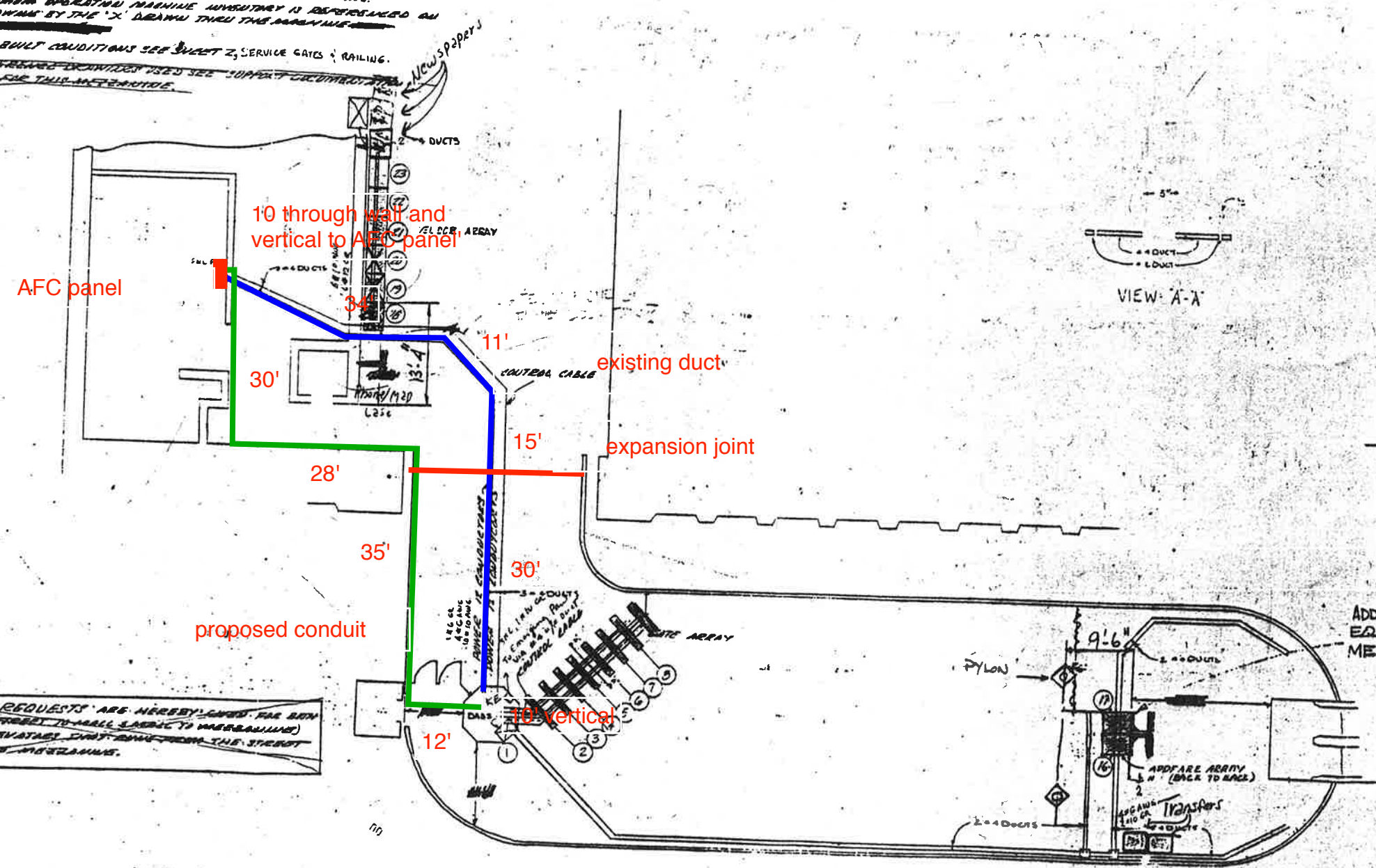




**NOTES:**

1. ALL INFORMATION CONCERNING DUCTS AND CONDUITS IS BASED ON INFORMATION SUPPLIED TO CUBIC - WESTERN DATA BY ~~MANHATTAN~~
2. TOTAL MACHINE INVENTORY IS DEPICTED ON THIS DRAWING.
3. THE MANHOLE OPERATING MACHINE INVENTORY IS REPRESENTED ON THIS DRAWING BY THE 'X' DRAWN THROUGH THE MACHINE.
4. FOR AS BUILT CONDITIONS SEE SHEET 2, SERVICE GATES & RAILING.
5. FOR REFERENCED DRAWINGS USED SEE SUPPORT DOCUMENTATION PACKAGE FOR THIS INTERFIDE.

REVISIONS		
DESCRIPTION	DATE	APVD.



~~PERMITS REQUESTS ARE HEREBY GIVEN FOR BOTH REGULATORY (STREET TO WALL, LAID TO MEZZANINE) AND THE ELEVATOR SYSTEM FROM THE STREET LEVEL TO THE MEZZANINE.~~

ADDFARE MACHINES  
EQUALLY SPACED ON  
MEZZANINE

F - DIMS:  
1470 - 3  
- 13  
- 95  
- 79

-1 INSTALLATION PLAN

**M** WASHINGTON METROPOLITAN  
AREA TRANSIT AUTHORITY

APPROVED AS CORRECTED  
NECESSITATED BY REQUIRED

Approval does not relieve the Contractor of the responsibility for the accuracy of this Document or for Full Compliance with the Contract Requirements.

BY: *W. J. [Signature]*  
DATE: 12-19-76

CP-22007A-116-2-0  
**WASHINGTON METROPOLITAN  
AREA TRANSIT AUTHORITY**

**ESSENTIAL SOURCE STATION**

**FREE MACHINES**

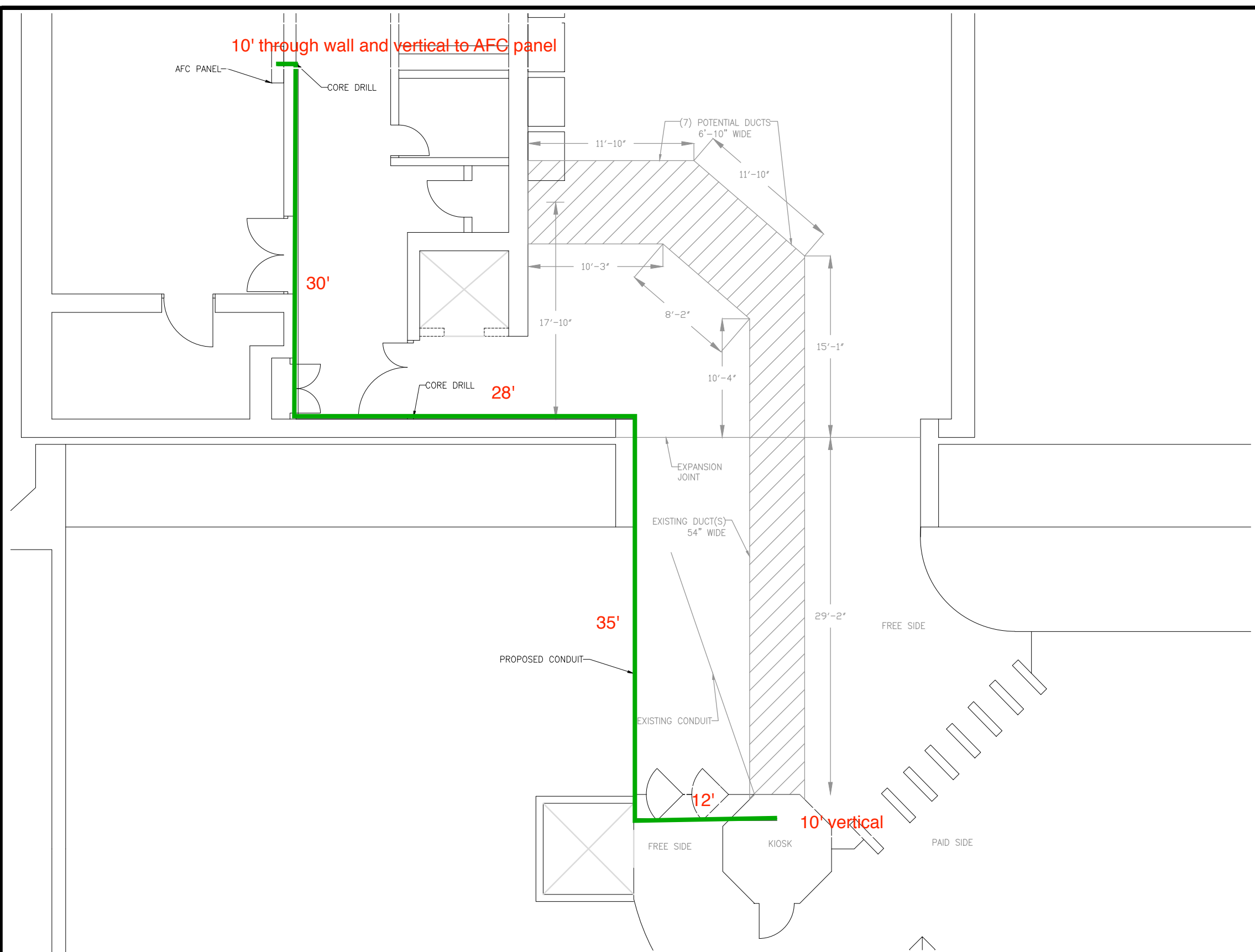
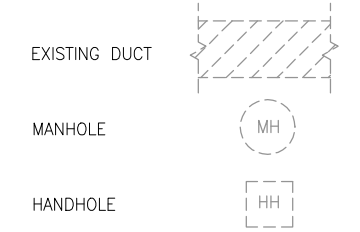
1972-1976

#059

**PLAN NOTES:**

1. DIMENSIONS ARE IN FEET AND INCHES.
2. DIMENSIONS ARE FOR REFERENCE ONLY.
3. EXISTING IN-FLOOR DUCTS/CONDUITS WERE IDENTIFIED USING A PORTABLE GPR SCANNING DEVICE.
4. THE SCANNING COVERAGE IS LIMITED TO THE MEZZANINE FLOOR ONLY.
5. GPR SCANNING HAS THE FOLLOWING LIMITATIONS: (i) 12 INCHES VISIBLE SCANNING DEPTH; (ii) VISIBILITY BEYOND CONGESTED OR NEAR SURFACE REINFORCEMENT LAYERS; (iii) DETECTION OF PVC AND OTHER NON-METALLIC OBJECTS (iv) DETERMINATION OF SIZE AND EXTENTS OF SUBSURFACE ANOMALIES SUCH AS SLAB VOIDS OR REBAR SIZES; AND (v) VISIBILITY WHEN VARIABLE MOISTURE CONDITIONS EXIST IN THE SUBSTRATE.

**LEGEND:**



**CAPITOL SOUTH STATION**  
SCALE: NOT TO SCALE

CONTRACT NO.  
XXXXXX

DESIGNED	C. LOOSE	03-15
		DATE
DRAWN	C. LOOSE	03-15
		DATE
CHECKED	M. BUTLER	03-15
		DATE
APPROVED		
		DATE

REFERENCE DRAWINGS	
NUMBER	DESCRIPTION

REVISIONS		
DATE	BY	DESCRIPTION

**WASHINGTON METROPOLITAN AREA TRANSIT AUTHORITY**

DEPARTMENT OF TRANSIT INFRASTRUCTURE  
AND ENGINEERING SERVICES  
OFFICE OF INFRASTRUCTURE RENEWAL PROGRAM

**GFP** A Gannett Fleming/Parsons  
JOINT VENTURE


APPROVED \_\_\_\_\_ SUBMITTED \_\_\_\_\_  
PROJECT MANAGER

15-NEPP-01  
IN - FLOOR DUCT INSPECTIONS  
D05 Capitol South  
PROPOSED POWER CONDUIT RUN

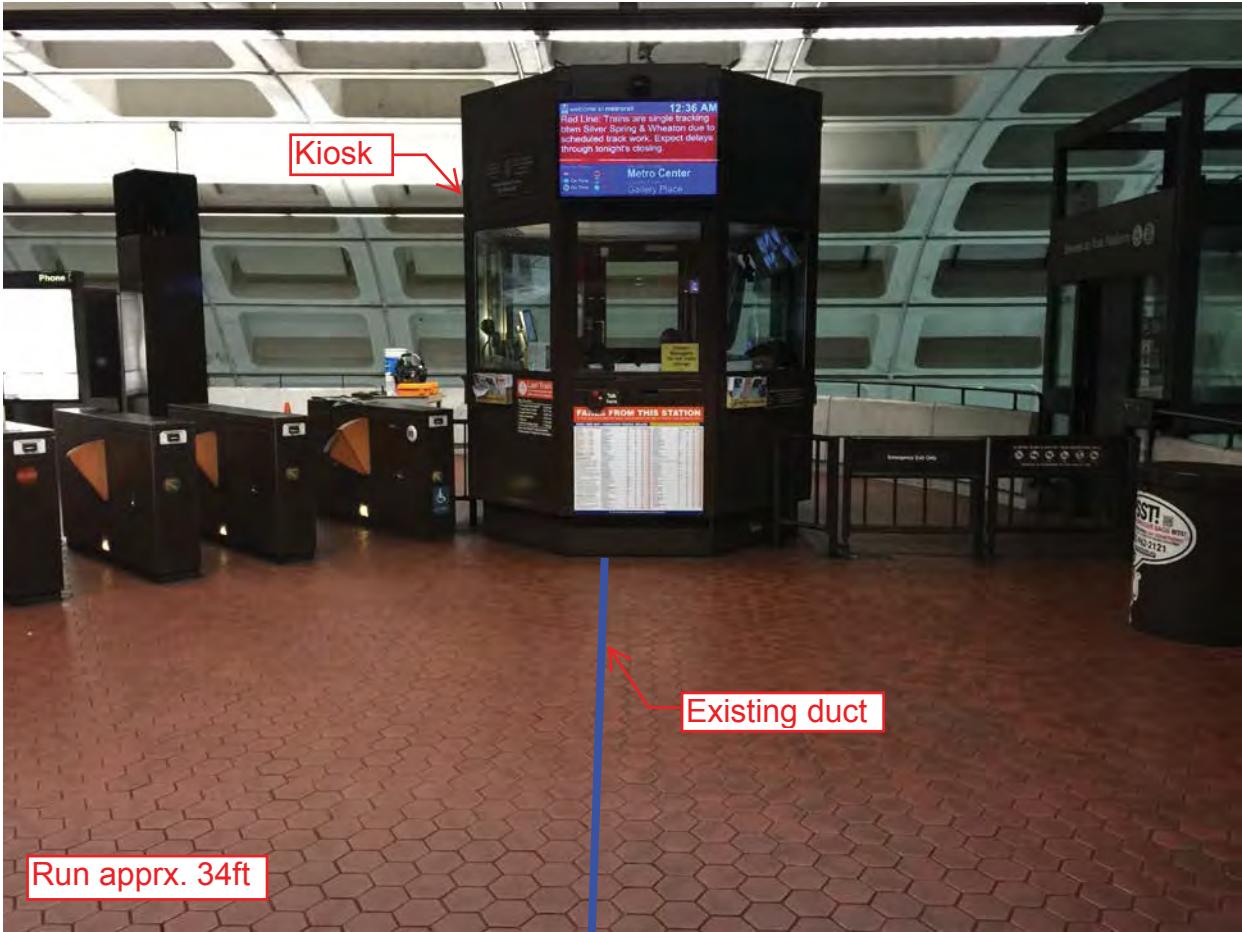
SCALE: NOT TO SCALE DRAWING NO. **D05-E-100** **XXX**





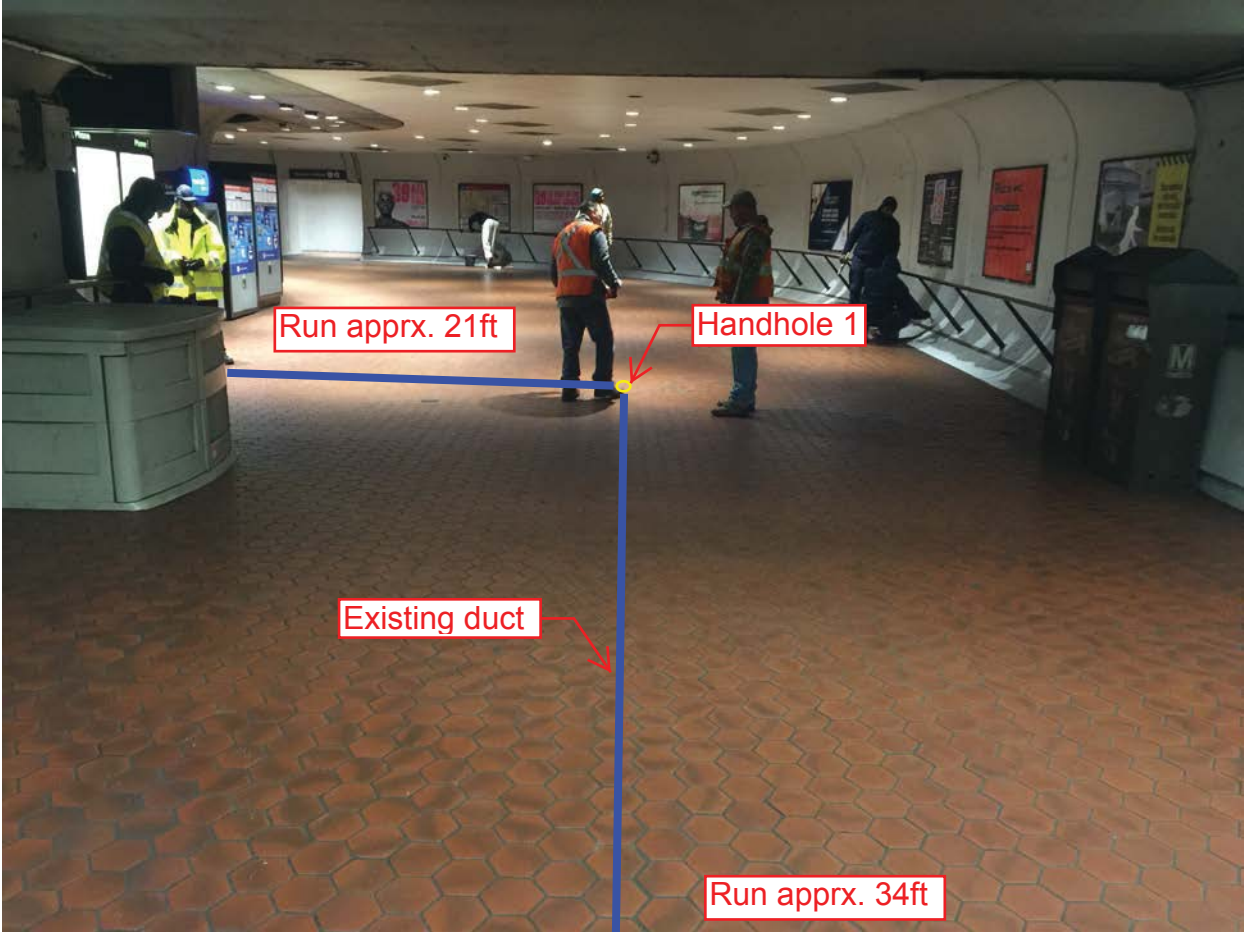
Scoping of Power Duct - Kiosk to AFC Panel		
Task	Yes/No	Notes
<b>Kiosk to Handhole 1 (34' run)</b>		
Was video scoping completed for the entire duct / conduit run?	No	Refer to WMATA Eastern Market 6inch Power HH1 to Kiosk (1).avi file.
Was pull string installed?	Yes	
Were there any obstructions or blockages? Provide details of type and specific location.	Yes	Duct was partially collapsed at expansion joint approximately 27' away from kiosk.
Is the duct / conduit at capacity? Provide additional details about the dimensions of duct / conduit and number of wires.	No	6" duct no wires.
<b>Handhole 1 to Handhole 2 (21' run)</b>		
Was video scoping completed for the entire duct / conduit run?	Yes	Refer to WMATA Eastern Market 6inch Power HH1 to HH2 (1).avi file.
Was pull string installed?	Yes	
Were there any obstructions or blockages? Provide details of type and specific location.	No	
Is the duct / conduit at capacity? Provide additional details about the dimensions of duct / conduit and number of wires.	No	6" duct no wires.
<b>Handhole 2 to Handhole 3 (35' run)</b>		
Was video scoping completed for the entire duct / conduit run?	Yes	Refer to WMATA Eastern Market 6inch Power HH2 to HH3 to AFC (1).avi file.
Was pull string installed?	Yes	
Were there any obstructions or blockages? Provide details of type and specific location.	No	
Is the duct / conduit at capacity? Provide additional details about the dimensions of duct / conduit and number of wires.	No	6" duct less than 15 wires.
<b>Handhole 3 to AFC Panel (5' run)</b>		
Was video scoping completed for the entire duct / conduit run?	No	90 degree bend at AFC Panel prevented necessary camera access.
Was pull string installed?	Yes	
Were there any obstructions or blockages? Provide details of type and specific location.	N/A	
Is the duct / conduit at capacity? Provide additional details about the dimensions of duct / conduit and number of wires.	No	6" duct less than 10 wires.
<b>Observations / Issues / Next Steps</b>		
<p>Total run from kiosk to AFC Panel is approximately 95 feet.</p> <p>AFC power run duct was collapsed at expansion joint between kiosk and handhole 1. Duct was in good condition other than expansion joint collapse. Due to duct run between kiosk and hanhole 1 being empty, duct can be repaired and is viable for further usage.</p>		
<b>Sign Off</b>		
	<b>GFP Representative</b>	<b>WMATA PRGM</b>
<b>Name:</b>	Balkis Hassane	
<b>Signature:</b>		
<b>Date:</b>	02/18/2015	

Picture 1: D06 Eastern Market – Duct run from kiosk toward handhole 1

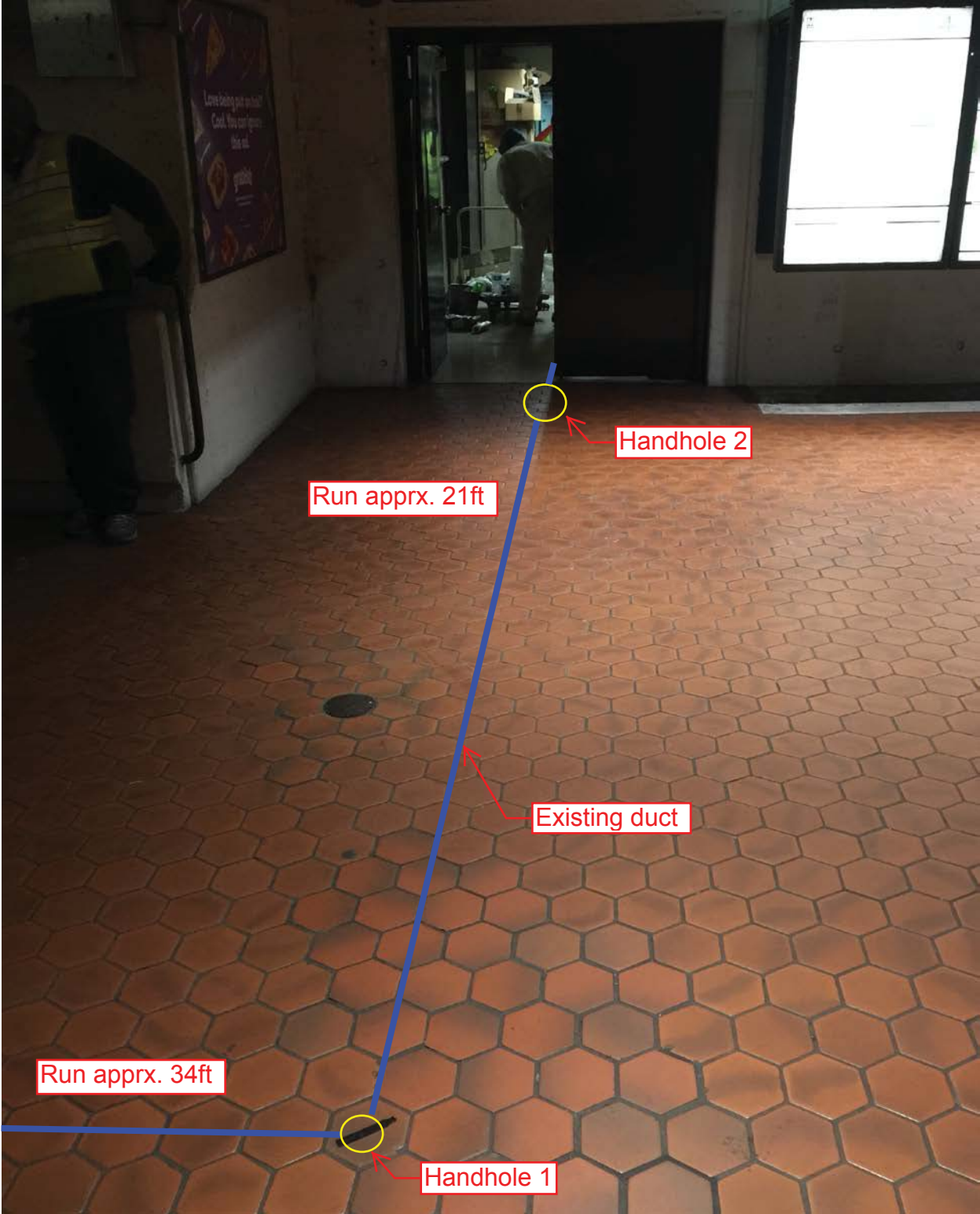




Picture 2: D06 Eastern Market – Duct run from kiosk toward handhole 1



Picture 3: D06 Eastern Market – Duct run from handhole 1 to handhole 2

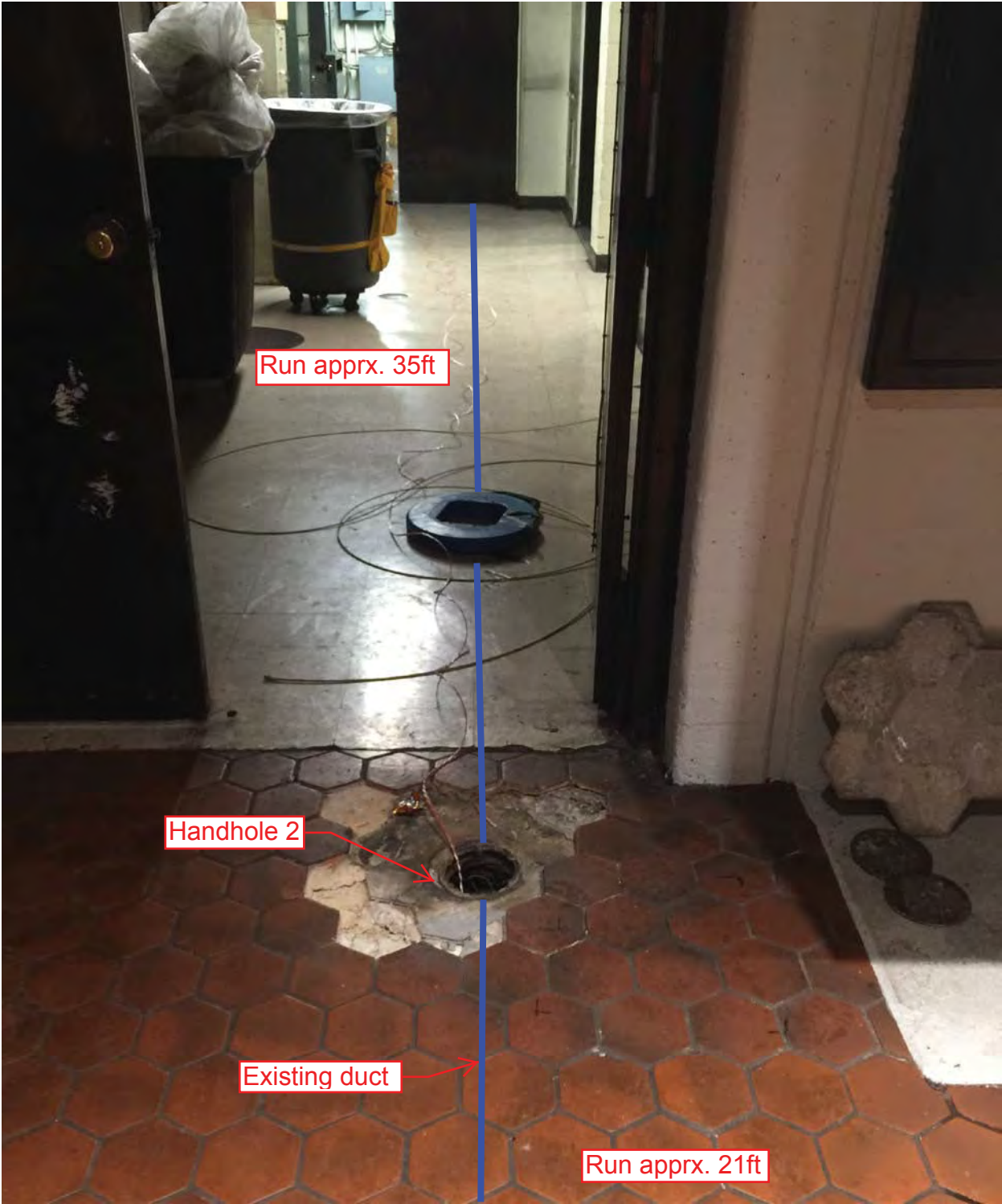


Picture 4: D06 Eastern Market – Handhole 1 location exposed

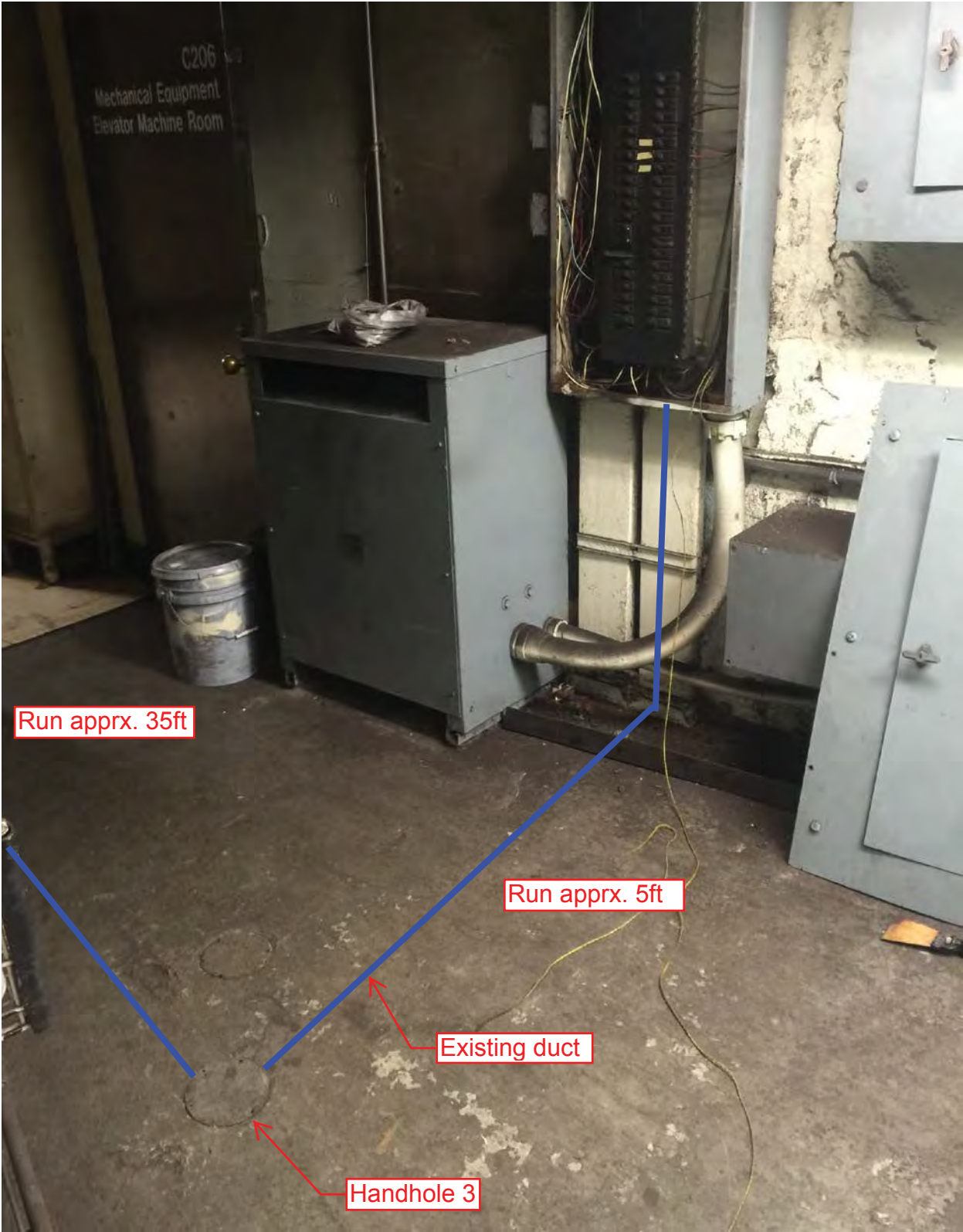




Picture 5: D06 Eastern Market – Handhole 2 location exposed



Picture 6: D06 Eastern Market – Duct run from handhole 3 to AFC Panel



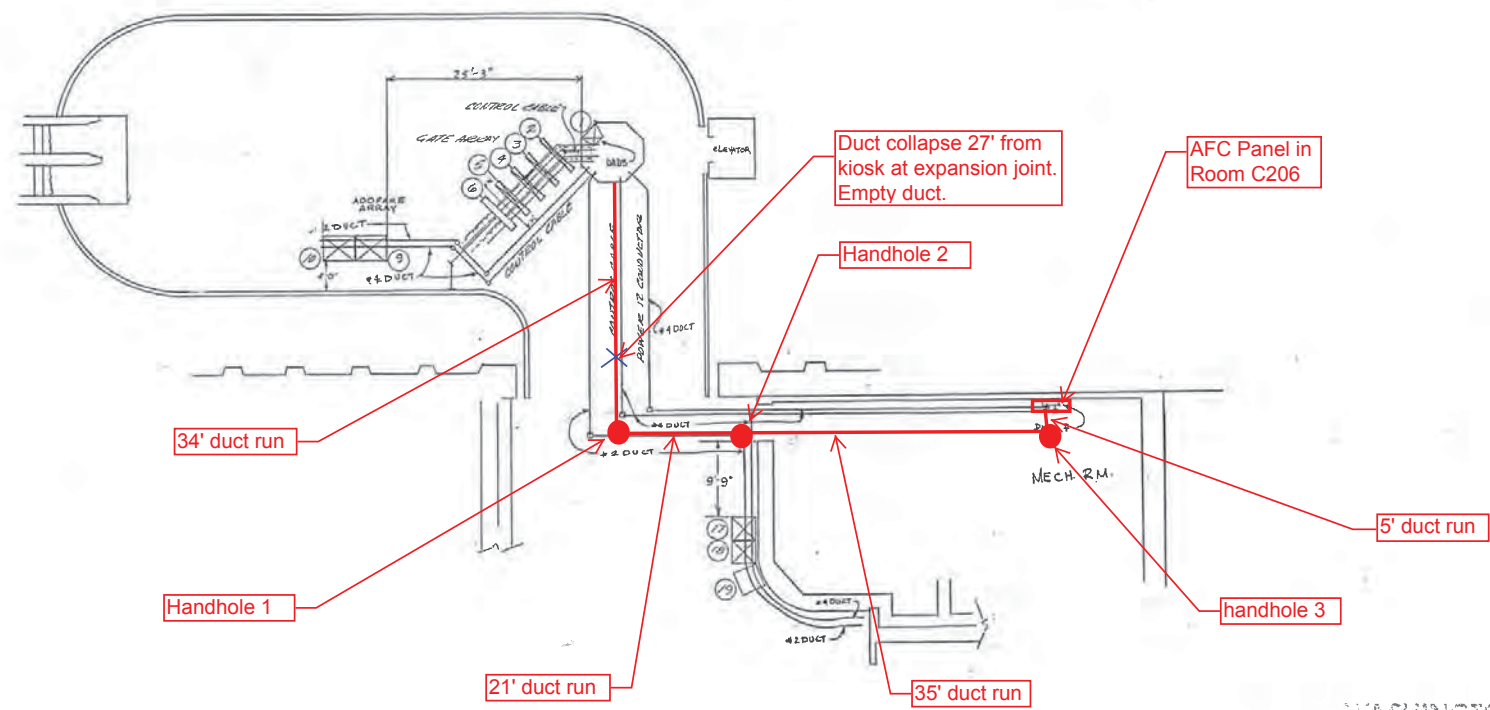
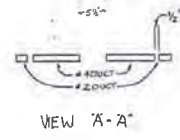
8 7 6 5 4 3 2

REVISIONS		
DESCRIPTION	DATE	APYD
AS BUILT DRAWING REVISION A	7-13-77	CP

NOTES  
 ALL INFORMATION CONCERNING DUCTS AND CONDUITS IS BASED ON INFORMATION SUPPLIED TO PUBLIC-WESTERN DATA BY WMATA

TOTAL MACHINE INVENTORY IS DEPICTED ON THIS DRAWING.  
 THE MINIMUM OPERATIONAL MACHINE INVENTORY IS REFERENCED ON THIS DRAWING BY THE "X" DRAWN THRU THE MACHINE

FOR AS BUILT CONDITIONS SEE SHEETS.  
 FOR REFERENCE DRAWINGS SEE SUPPORT DOCUMENTATION PACKAGE FOR THIS MESSAGE.

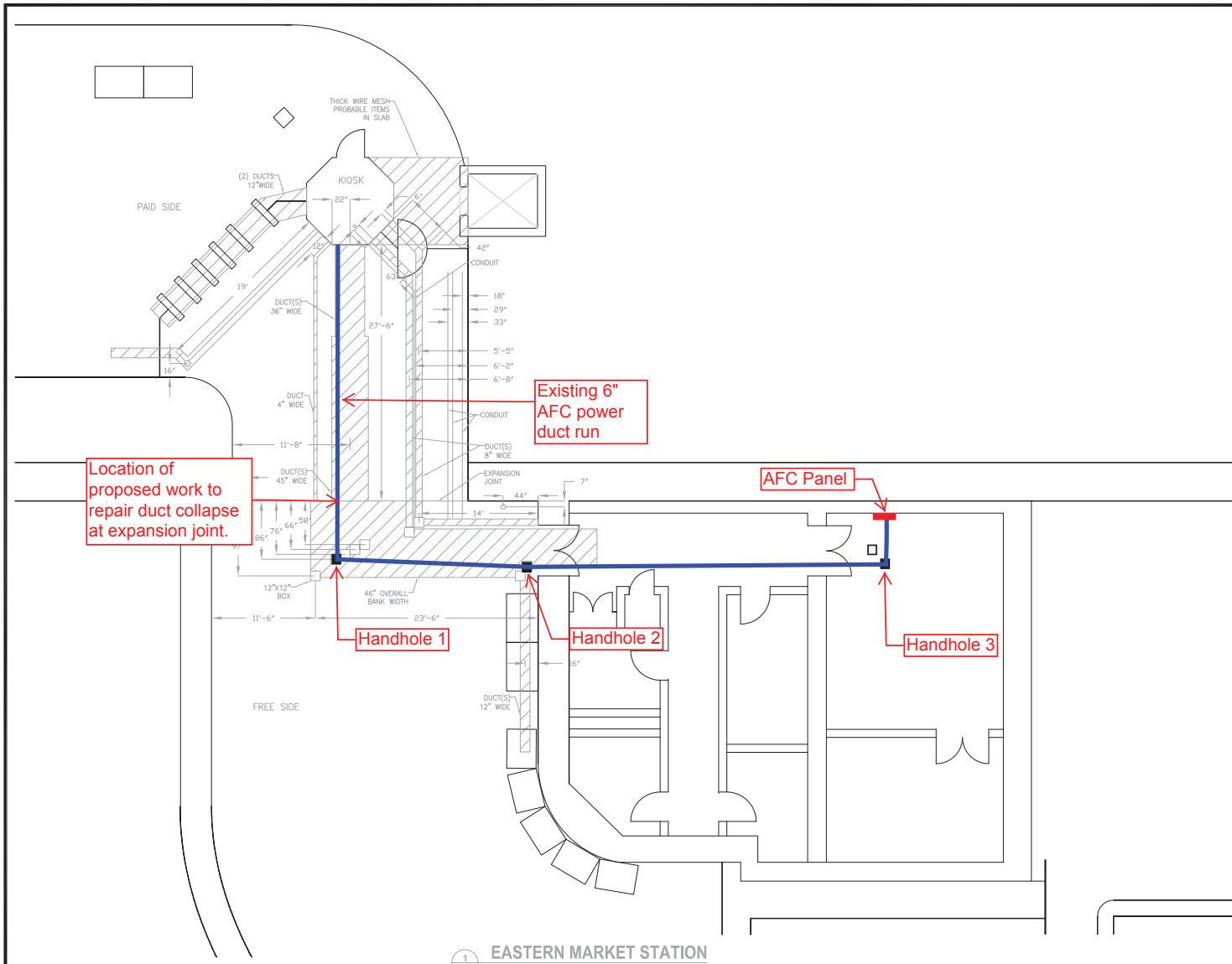


-1 INSTALLATION PLAN  
 (AS BUILT CONDITION)

WASHINGTON METRO DISTRICT  
 AREA TRANSIT AUTHORITY

CONTRACT NUMBER 27007K		CUBIC WESTERN DATA A member of Cubic Corporation 3600 LEANING WHEEL ROAD • FORT WORTH, TEXAS 76102	
DESIGN	APPROVAL	SIZE D	DRAWING NUMBER 926-0387
DATE 7/13/77	DATE 7/13/77	REV 60	SHEET 1 OF 1

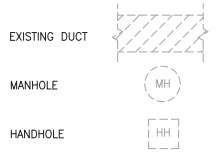




**PLAN NOTES:**

1. DIMENSIONS ARE IN FEET AND INCHES.
2. DIMENSIONS ARE FOR REFERENCE ONLY.
3. EXISTING IN-FLOOR DUCTS/CONDUITS WERE IDENTIFIED USING A PORTABLE GPR SCANNING DEVICE.
4. THE SCANNING COVERAGE IS LIMITED TO THE MEZZANINE FLOOR ONLY.
5. GPR SCANNING HAS THE FOLLOWING LIMITATIONS: (i) 12 INCHES VISIBLE SCANNING DEPTH; (ii) VISIBILITY BEYOND CONGESTED OR NEAR SURFACE REINFORCEMENT LAYERS; (iii) DETECTION OF PVC AND OTHER NON-METALLIC OBJECTS (iv) DETERMINATION OF SIZE AND EXTENTS OF SUBSURFACE ANOMALIES SUCH AS SLAB VOIDS OR REBAR SIZES; AND (v) VISIBILITY WHEN VARIABLE MOISTURE CONDITIONS EXIST IN THE SUBSTRATE.

**LEGEND:**



Location of proposed work to repair duct collapse at expansion joint.

Existing 6" AFC power duct run

AFC Panel

Handhole 1

Handhole 2

Handhole 3

**EASTERN MARKET STATION**  
SCALE: NOT TO SCALE

CONTRACT NO. XXXXXX

DESIGNED C. LOOSE DATE 03-15	REFERENCE DRAWINGS		REVISIONS	
	NUMBER	DESCRIPTION	DATE	BY
DRAWN C. LOOSE DATE 03-15				
CHECKED M. BUTLER DATE 03-15				
APPROVED				

WASHINGTON METROPOLITAN AREA TRANSIT AUTHORITY  
DEPARTMENT OF TRANSIT INFRASTRUCTURE AND ENGINEERING SERVICES  
OFFICE OF INFRASTRUCTURE RENEWAL PROGRAM

**GFP** a Geacost Fleming/Parsons JOINT VENTURE

APPROVED \_\_\_\_\_ SUBMITTED \_\_\_\_\_ PROJECT MANAGER

15-NEPP-01  
IN - FLOOR DUCT INSPECTIONS  
D06 Eastern Market  
PROPOSED POWER CONDUIT RUN

SCALE: NOT TO SCALE

DRAWING NO. **D06-E-100**

XXX